


Qty.	Description
1	<p>HYDRO MULTI-E 2 CRIE 15-5</p>  <p>Note! Product picture may differ from actual product</p> <p>Product No.: On request</p> <p>GRUNDFOS Hydro Multi-E booster sets are designed for the transfer and pressure boosting of clean water in waterworks, blocks of flats, hotels, industry, hospitals, schools, etc.</p> <p>GRUNDFOS Hydro Multi-E booster set consists of 2 to 4 CRIE pumps coupled in parallel and mounted on a common base frame provided with all the necessary fittings.</p> <p>Hydro Multi-E is mounted on a common base frame made of stainless steel (DIN W.-Nr. 1.4301). On the suction side are fitted a suction manifold (DIN W.-Nr. 1.4401 or DIN W.-Nr. 1.4571) , a pressure switch mounted on a drainable valve and an isolating valve.</p> <p>On the discharge side of the pumps are fitted a non-return valve, an isolating valve, a pressure gauge, two pressure transmitters mounted on a drainable valve a diaphragm tank and a stainless steel discharge manifold (DIN W.-Nr. 1.4401 or DIN W.-Nr. 1.4571).</p> <p>The Hydro Multi-E is fitted with an on/off-switch for the supply voltage.</p> <p>The Hydro Multi-E is designed for maintaining a constant pressure regardless of flow changes and fluctuation.</p> <p>The internal PI-controller regulates the number of running pumps and the speed of the pumps according to the required flow.</p> <p>The system can be operated directly on the panel of any of the pumps or via Grundfos GO (available as accessory)</p> <p>Besides the system features:</p> <ul style="list-style-type: none"> 2 Digital outputs 2 Digital inputs (one used for dry run protection) 2 Analogue inputs (one used for discharge pressure sensor) Multi-Master functionality 2 Limit functions Set-point influence function Pipe filling function High efficient PM motors <p>Available communication protocols:</p> <ul style="list-style-type: none"> •LON •Profibus •Modbus •SMS/GSM/GPRS •GRM •BACnet •BACnet IP



Company name: Landscape Watering Systems (LWS) Ltd

Created by:

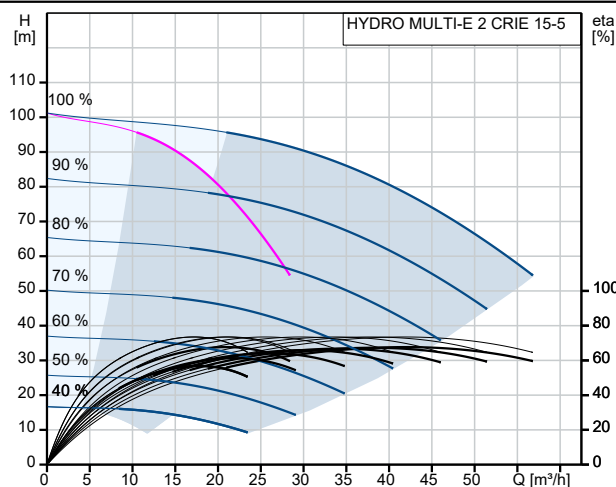
Phone: 01722 716969

Email: sales@lws.uk.com

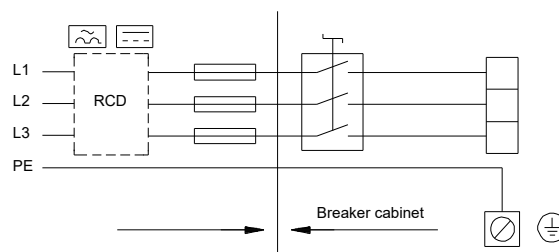
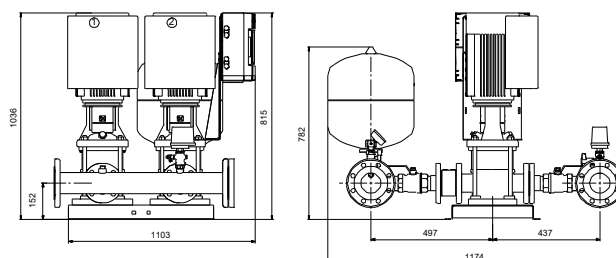
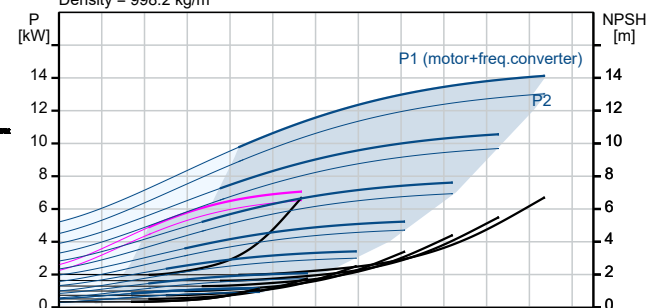
Date: 11/12/2025

Qty.	Description
1	<p>•Modbus TCP •PROFINET</p> <p>When delivered, the GRUNDFOS Hydro Multi-E booster set is factory tested and ready for operation.</p> <p>Liquid: Pumped liquid: Water Liquid temperature range: 5 .. 60 °C Selected liquid temperature: 20 °C Density: 998.2 kg/m³</p> <p>Materials: Pump housing: Stainless steel</p> <p>Installation: Range of ambient temperature: 0 .. 40 °C Maximum operating pressure: 16 bar Maximum permissible inlet pressure: PN 16 bar Flange standard: DIN2642 Manifold inlet: DN 80 Manifold outlet: DN 80 Earth connection: PE</p> <p>Electrical data: Power (P2) main pump: 7.5 kW Mains frequency: 50 / 60 Hz Rated voltage: 3 x 380-415 V Rated current: 27 A IE Efficiency class: IE5 Start. method: electronically Enclosure class (IEC 34-5): IP54</p> <p>Tank: Tank volume: 25 l Diaphragm tank: Yes</p> <p>Others: Net weight: 299 kg Gross weight: 357 kg Shipping volume: 1.52 m³ Language: GB</p>

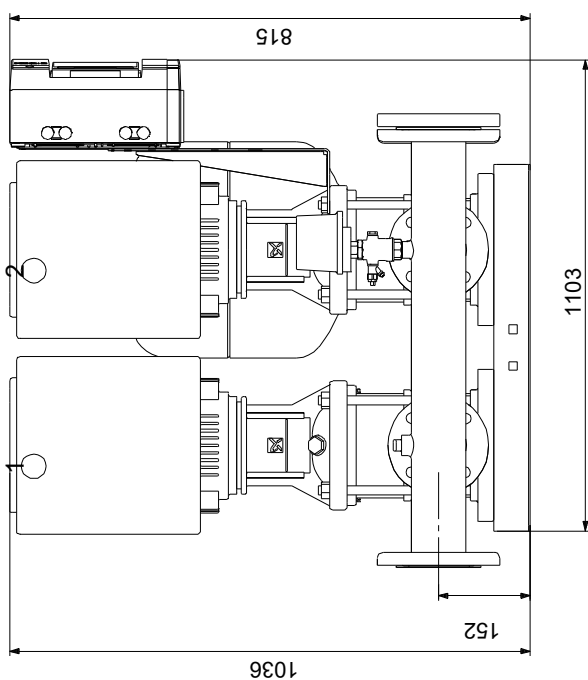
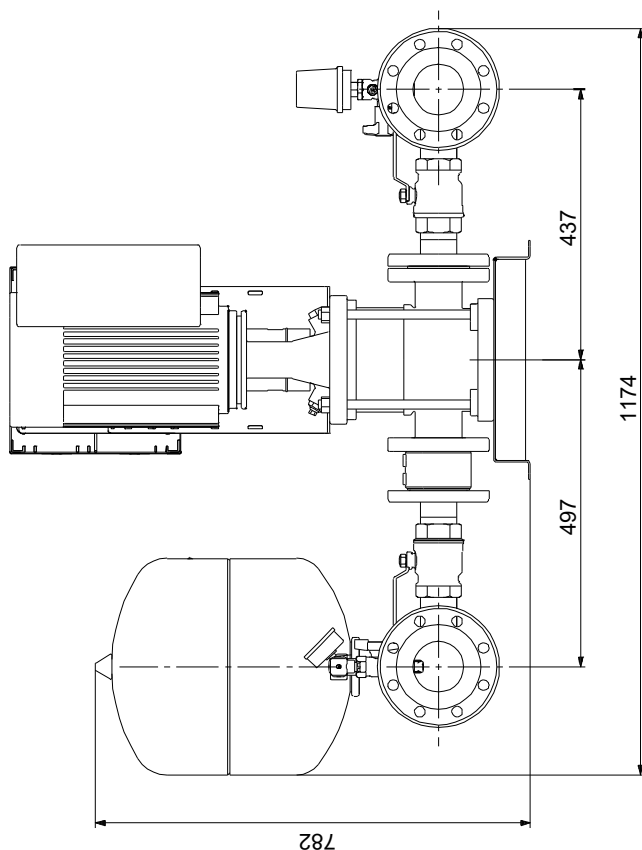
Description	Value
General information:	
Product name:	HYDRO MULTI-E 2 CRIE 15-5
Product No:	On request
EAN number:	On request
Technical:	
Max. flow:	60 m³/h
Min flow system:	6 m³/h
Max. head:	102 m
Pump name:	CRIE 15-5
Number of pumps:	2
Materials:	
Pump housing:	Stainless steel
Manifolds:	Stainless steel
Installation:	
Range of ambient temperature:	0 .. 40 °C
Maximum operating pressure:	16 bar
Maximum permissible inlet pressure:	PN 16 bar
Liquid:	
Pumped liquid:	Water
Liquid temperature range:	5 .. 60 °C
Selected liquid temperature:	20 °C
Density:	998.2 kg/m³
Electrical data:	
Power (P2) main pump:	7.5 kW
Mains frequency:	50 / 60 Hz
Rated voltage:	3 x 380-415 V
Rated current:	27 A
IE Efficiency class:	IE5
Start. method:	electronically
Enclosure class (IEC 34-5):	IP54
Tank:	
Tank volume:	25 l
Diaphragm tank:	Yes
Others:	
Net weight:	299 kg
Gross weight:	357 kg
Shipping volume:	1.52 m³
Language:	GB



Losses in fittings and valves not included
Pumped liquid = Water
Liquid temperature during operation = 20 °C
Density = 998.2 kg/m³

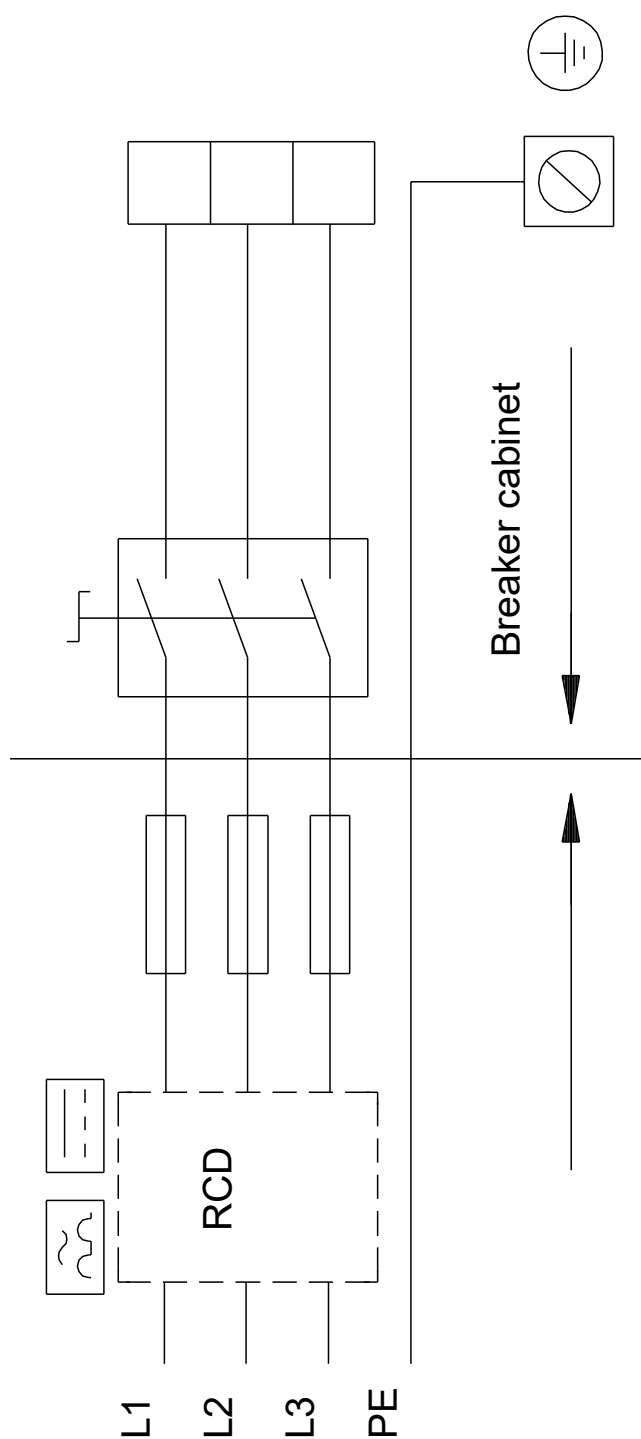


On request HYDRO MULTI-E 2 CRIE 15-5



Note! All units are in [mm] unless others are stated.
Disclaimer: This simplified dimensional drawing does not show all details.

On request HYDRO MULTI-E 2 CRIE 15-5



Note! All units are in [mm] unless others are stated.