
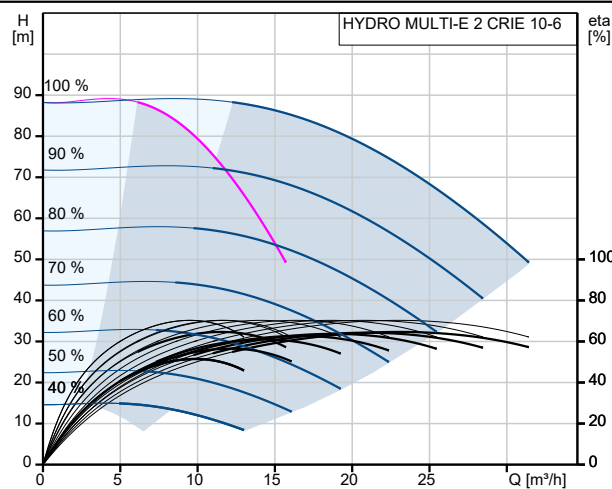


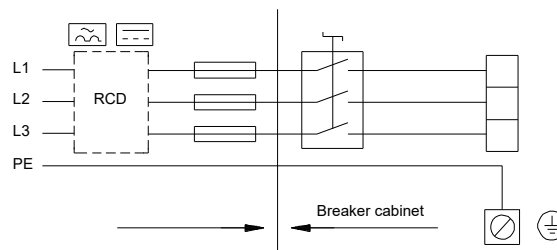
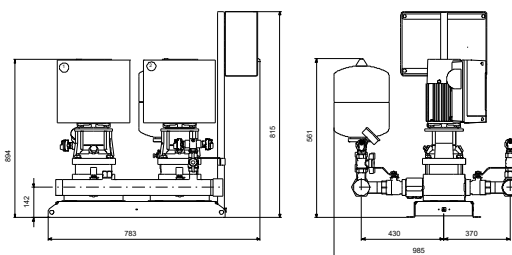
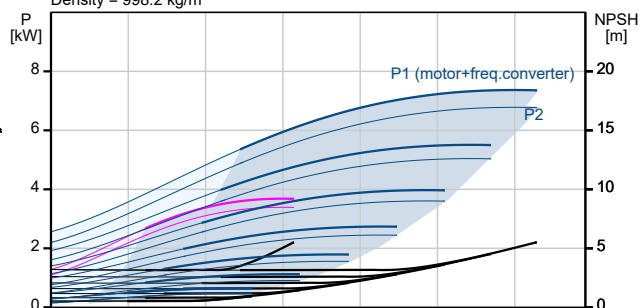
Qty.	Description
1	<p><b>HYDRO MULTI-E 2 CRIE 10-6</b></p>  <p><b>Note! Product picture may differ from actual product</b></p> <p>Product No.: On request</p> <p>GRUNDFOS Hydro Multi-E booster sets are designed for the transfer and pressure boosting of clean water in waterworks, blocks of flats, hotels, industry, hospitals, schools, etc.</p> <p>GRUNDFOS Hydro Multi-E booster set consists of 2 to 4 CRIE pumps coupled in parallel and mounted on a common base frame provided with all the necessary fittings.</p> <p>Hydro Multi-E is mounted on a common base frame made of stainless steel (DIN W.-Nr. 1.4301). On the suction side are fitted a suction manifold (DIN W.-Nr. 1.4401 or DIN W.-Nr. 1.4571) , a pressure switch mounted on a drainable valve and an isolating valve.</p> <p>On the discharge side of the pumps are fitted a non-return valve, an isolating valve, a pressure gauge, two pressure transmitters mounted on a drainable valve a diaphragm tank and a stainless steel discharge manifold (DIN W.-Nr. 1.4401 or DIN W.-Nr. 1.4571).</p> <p>The Hydro Multi-E is fitted with an on/off-switch for the supply voltage.</p> <p>The Hydro Multi-E is designed for maintaining a constant pressure regardless of flow changes and fluctuation.</p> <p>The internal PI-controller regulates the number of running pumps and the speed of the pumps according to the required flow.</p> <p>The system can be operated directly on the panel of any of the pumps or via Grundfos GO (available as accessory)</p> <p>Besides the system features:</p> <ul style="list-style-type: none"> <li>2 Digital outputs</li> <li>2 Digital inputs (one used for dry run protection)</li> <li>2 Analogue inputs (one used for discharge pressure sensor)</li> <li>Multi-Master functionality</li> <li>2 Limit functions</li> <li>Set-point influence function</li> <li>Pipe filling function</li> <li>High efficient PM motors</li> </ul> <p>Available communication protocols:</p> <ul style="list-style-type: none"> <li>•LON</li> <li>•Profibus</li> <li>•Modbus</li> <li>•SMS/GSM/GPRS</li> <li>•GRM</li> <li>•BACnet</li> <li>•BACnet IP</li> </ul>

Qty.	Description
1	<p>•Modbus TCP •PROFINET</p> <p>When delivered, the GRUNDFOS Hydro Multi-E booster set is factory tested and ready for operation.</p> <p>Liquid:</p> <p>Pumped liquid: Water</p> <p>Liquid temperature range: 5 .. 60 °C</p> <p>Selected liquid temperature: 20 °C</p> <p>Density: 998.2 kg/m³</p> <p>Materials:</p> <p>Pump housing: Stainless steel</p> <p>Installation:</p> <p>Range of ambient temperature: 0 .. 40 °C</p> <p>Maximum operating pressure: 16 bar</p> <p>Maximum permissible inlet pressure: PN 16 bar</p> <p>Flange standard: DIN ISO 7/1</p> <p>Manifold inlet: R 2 1/2</p> <p>Manifold outlet: R 2 1/2</p> <p>Earth connection: PE</p> <p>Electrical data:</p> <p>Power (P2) main pump: 4 kW</p> <p>Mains frequency: 50 / 60 Hz</p> <p>Rated voltage: 3 x 380-415 V</p> <p>Rated current: 15 A</p> <p>IE Efficiency class: IE5</p> <p>Start. method: electronically</p> <p>Enclosure class (IEC 34-5): IP54</p> <p>Tank:</p> <p>Tank volume: 12 l</p> <p>Diaphragm tank: Yes</p> <p>Others:</p> <p>Net weight: 204 kg</p> <p>Gross weight: 220 kg</p> <p>Shipping volume: 0.747 m³</p> <p>Language: GB</p>

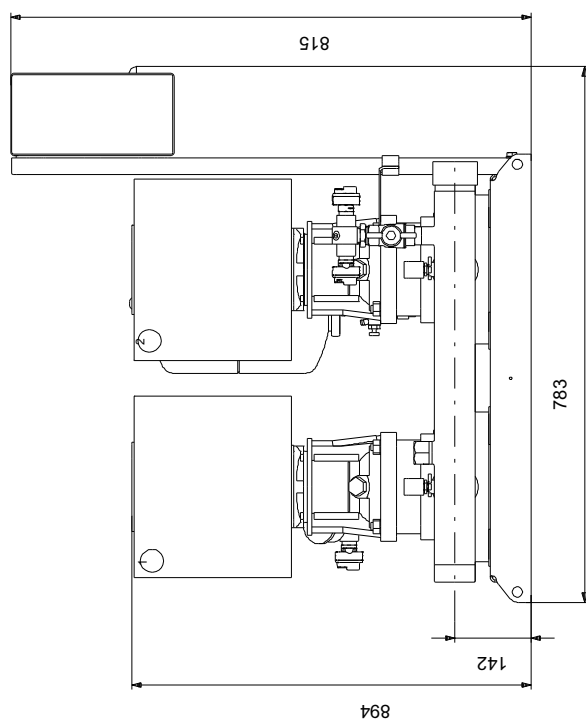
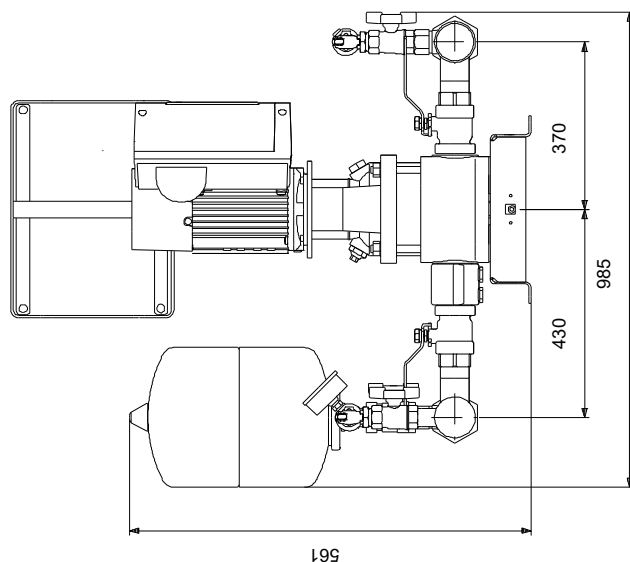
Description	Value
<b>General information:</b>	
Product name:	HYDRO MULTI-E 2 CRIE 10-6
Product No:	On request
EAN number:	On request
<b>Technical:</b>	
Max. flow:	36 m <sup>3</sup> /h
Min flow system:	4.8 m <sup>3</sup> /h
Max. head:	89 m
Pump name:	CRIE 10-6
Number of pumps:	2
<b>Materials:</b>	
Pump housing:	Stainless steel
Manifolds:	Stainless steel
<b>Installation:</b>	
Range of ambient temperature:	0 .. 40 °C
Maximum operating pressure:	16 bar
Maximum permissible inlet pressure:	PN 16 bar
<b>Liquid:</b>	
Pumped liquid:	Water
Liquid temperature range:	5 .. 60 °C
Selected liquid temperature:	20 °C
Density:	998.2 kg/m <sup>3</sup>
<b>Electrical data:</b>	
Power (P2) main pump:	4 kW
Mains frequency:	50 / 60 Hz
Rated voltage:	3 x 380-415 V
Rated current:	15 A
IE Efficiency class:	IE5
Start. method:	electronically
Enclosure class (IEC 34-5):	IP54
<b>Tank:</b>	
Tank volume:	12 l
Diaphragm tank:	Yes
<b>Others:</b>	
Net weight:	204 kg
Gross weight:	220 kg
Shipping volume:	0.747 m <sup>3</sup>
Language:	GB



Losses in fittings and valves not included  
Pumped liquid = Water  
Liquid temperature during operation = 20 °C  
Density = 998.2 kg/m<sup>3</sup>

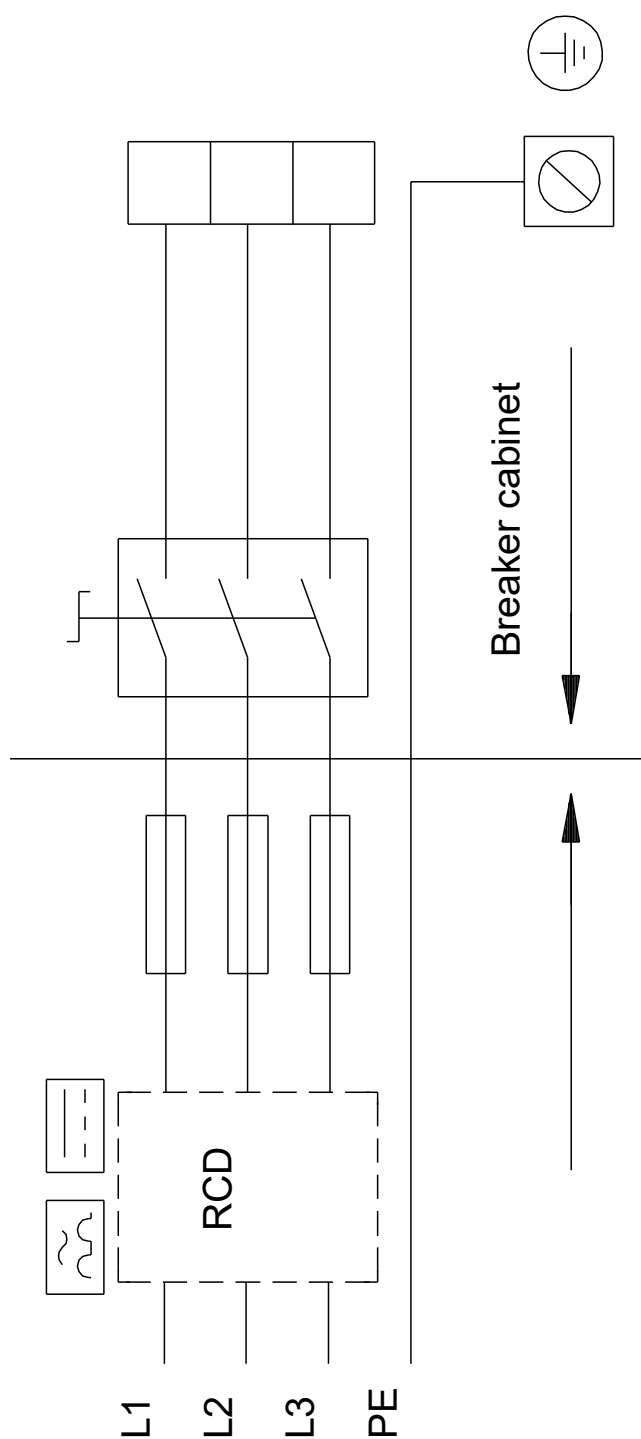


## On request HYDRO MULTI-E 2 CRIE 10-6



Note! All units are in [mm] unless others are stated.  
Disclaimer: This simplified dimensional drawing does not show all details.

## On request HYDRO MULTI-E 2 CRIE 10-6



Note! All units are in [mm] unless others are stated.