


Qty.	Description
1	<p><b>HYDRO MULTI-E 2 CRIE 10-5</b></p>  <p><b>Note! Product picture may differ from actual product</b></p> <p>Product No.: On request</p> <p>GRUNDFOS Hydro Multi-E booster sets are designed for the transfer and pressure boosting of clean water in waterworks, blocks of flats, hotels, industry, hospitals, schools, etc.</p> <p>GRUNDFOS Hydro Multi-E booster set consists of 2 to 4 CRIE pumps coupled in parallel and mounted on a common base frame provided with all the necessary fittings.</p> <p>Hydro Multi-E is mounted on a common base frame made of stainless steel (DIN W.-Nr. 1.4301). On the suction side are fitted a suction manifold (DIN W.-Nr. 1.4401 or DIN W.-Nr. 1.4571) , a pressure switch mounted on a drainable valve and an isolating valve.</p> <p>On the discharge side of the pumps are fitted a non-return valve, an isolating valve, a pressure gauge, two pressure transmitters mounted on a drainable valve a diaphragm tank and a stainless steel discharge manifold (DIN W.-Nr. 1.4401 or DIN W.-Nr. 1.4571).</p> <p>The Hydro Multi-E is fitted with an on/off-switch for the supply voltage.</p> <p>The Hydro Multi-E is designed for maintaining a constant pressure regardless of flow changes and fluctuation.</p> <p>The internal PI-controller regulates the number of running pumps and the speed of the pumps according to the required flow.</p> <p>The system can be operated directly on the panel of any of the pumps or via Grundfos GO (available as accessory)</p> <p>Besides the system features:</p> <ul style="list-style-type: none"> <li>2 Digital outputs</li> <li>2 Digital inputs (one used for dry run protection)</li> <li>2 Analogue inputs (one used for discharge pressure sensor)</li> <li>Multi-Master functionality</li> <li>2 Limit functions</li> <li>Set-point influence function</li> <li>Pipe filling function</li> <li>High efficient PM motors</li> </ul> <p>Available communication protocols:</p> <ul style="list-style-type: none"> <li>•LON</li> <li>•Profibus</li> <li>•Modbus</li> <li>•SMS/GSM/GPRS</li> <li>•GRM</li> <li>•BACnet</li> <li>•BACnet IP</li> </ul>



**Company name:** Landscape Watering Systems (LWS) Ltd

**Created by:**

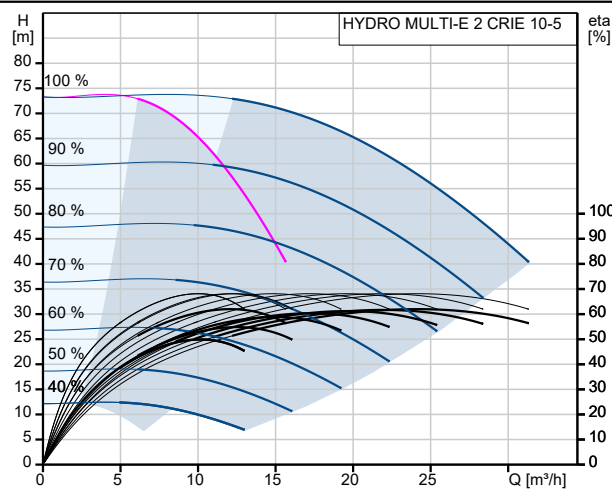
**Phone:** 01722 716969

**Email:** sales@lws.uk.com

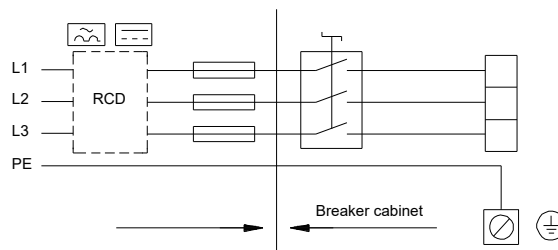
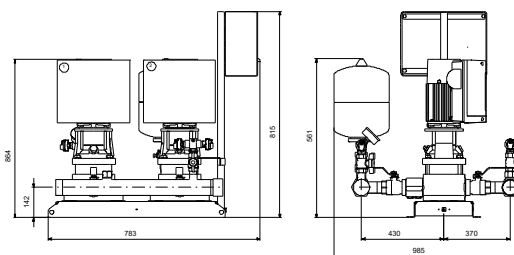
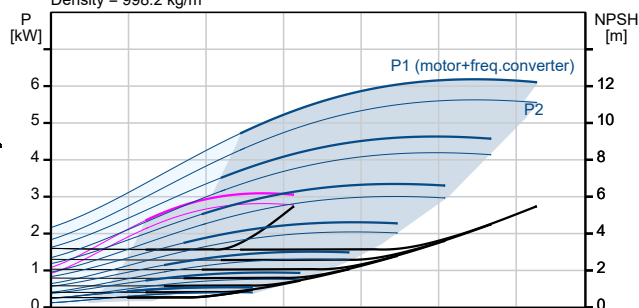
**Date:** 11/12/2025

Qty.	Description
1	<p>•Modbus TCP •PROFINET</p> <p>When delivered, the GRUNDFOS Hydro Multi-E booster set is factory tested and ready for operation.</p> <p>Liquid: Pumped liquid: Water Liquid temperature range: 5 .. 60 °C Selected liquid temperature: 20 °C Density: 998.2 kg/m³</p> <p>Materials: Pump housing: Stainless steel</p> <p>Installation: Range of ambient temperature: 0 .. 40 °C Maximum operating pressure: 10 bar Maximum permissible inlet pressure: PN 10 bar Flange standard: DIN ISO 7/1 Manifold inlet: R 2 1/2 Manifold outlet: R 2 1/2 Earth connection: PE</p> <p>Electrical data: Power (P2) main pump: 3 kW Mains frequency: 50 / 60 Hz Rated voltage: 3 x 380-415 V Rated current: 11 A IE Efficiency class: IE5 Start. method: electronically Enclosure class (IEC 34-5): IP54</p> <p>Tank: Tank volume: 12 l Diaphragm tank: Yes</p> <p>Others: Net weight: 193 kg Gross weight: 238 kg Shipping volume: 0.722 m³ Language: GB Danish VVS No.: 385552105</p>

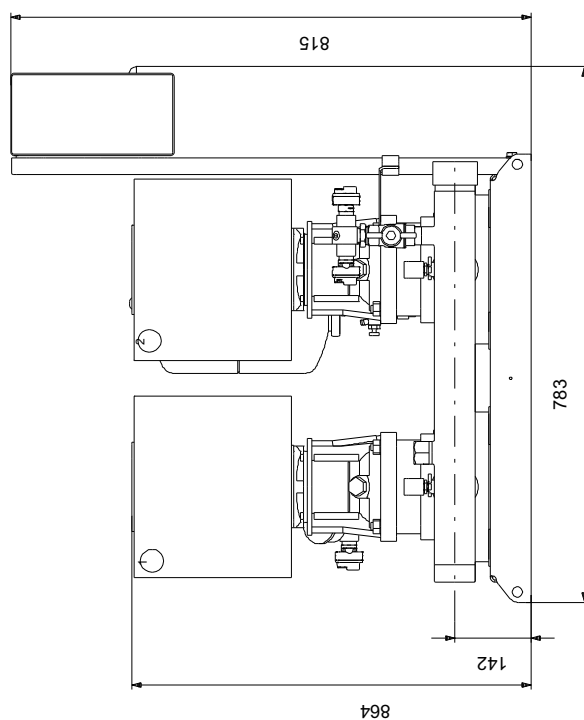
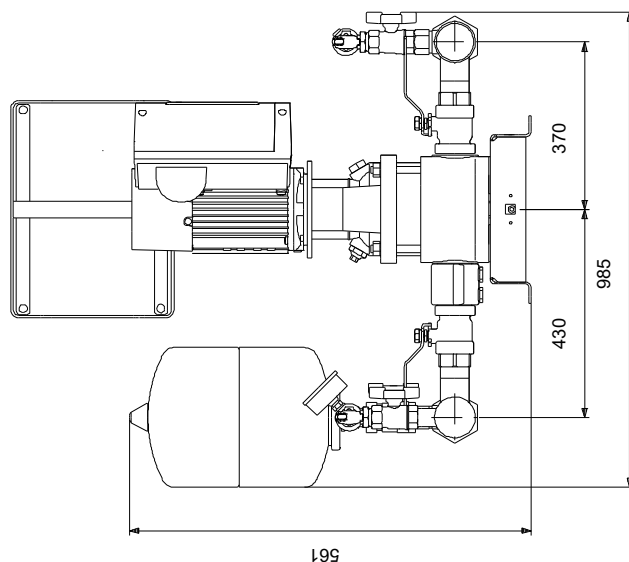
Description	Value
<b>General information:</b>	
Product name:	HYDRO MULTI-E 2 CRIE 10-5
Product No:	On request
EAN number:	On request
<b>Technical:</b>	
Max. flow:	36 m³/h
Min flow system:	4.8 m³/h
Max. head:	74 m
Pump name:	CRIE 10-5
Number of pumps:	2
<b>Materials:</b>	
Pump housing:	Stainless steel
Manifolds:	Stainless steel
<b>Installation:</b>	
Range of ambient temperature:	0 .. 40 °C
Maximum operating pressure:	10 bar
Maximum permissible inlet pressure:	PN 10 bar
Flange standard:	DIN ISO 7/1
Manifold inlet:	R 2 1/2
Manifold outlet:	R 2 1/2
Earth connection:	PE
<b>Liquid:</b>	
Pumped liquid:	Water
Liquid temperature range:	5 .. 60 °C
Selected liquid temperature:	20 °C
Density:	998.2 kg/m³
<b>Electrical data:</b>	
Power (P2) main pump:	3 kW
Mains frequency:	50 / 60 Hz
Rated voltage:	3 x 380-415 V
Rated current:	11 A
IE Efficiency class:	IE5
Start. method:	electronically
Enclosure class (IEC 34-5):	IP54
<b>Tank:</b>	
Tank volume:	12 l
Diaphragm tank:	Yes
<b>Others:</b>	
Net weight:	193 kg
Gross weight:	238 kg
Shipping volume:	0.722 m³
Language:	GB
Danish VVS No.:	385552105



Losses in fittings and valves not included  
Pumped liquid = Water  
Liquid temperature during operation = 20 °C  
Density = 998.2 kg/m³

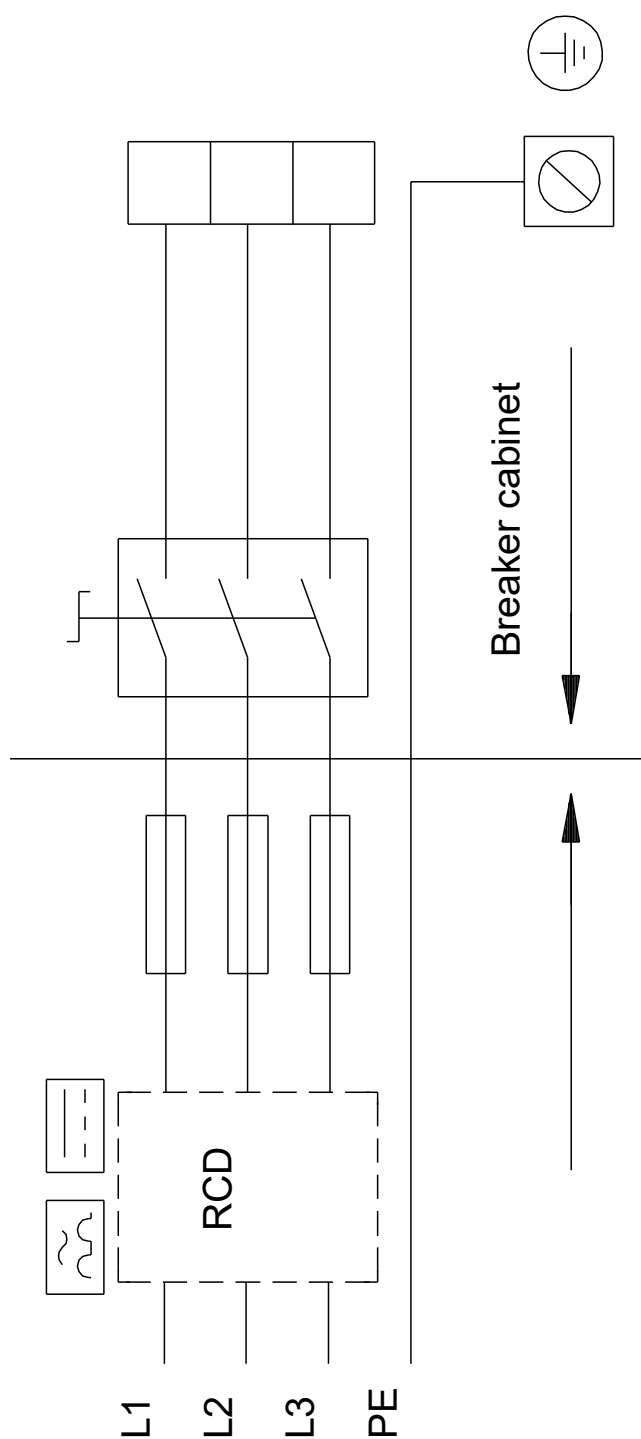


## On request HYDRO MULTI-E 2 CRIE 10-5



Note! All units are in [mm] unless others are stated.  
Disclaimer: This simplified dimensional drawing does not show all details.

## On request HYDRO MULTI-E 2 CRIE 10-5



Note! All units are in [mm] unless others are stated.