

**RADIUS**  
SYSTEMS

**PE100**  
**BLACK**  
**PIPE**

# PE100 BLACK PIPE

ENGINEERED PIPE SOLUTION FOR MODERN PIPELINE NETWORKS



PE100 Black Pipe from Radius Systems approved to BS EN 12201-2 is manufactured from WRAS approved material.

Manufactured from PE100 polyethylene, with a solid wall construction, PE100 Black Pipes are available in diameters 20 to 1200 mm in a range of SDRs and pressure ratings.

PE100 Black Pipes are easily joined using industry standard electrofusion and butt-fusion welding techniques.

## Key Features & Benefits

- Joined using conventional electrofusion and butt-fusion techniques.
- Fully compatible with approved electrofusion, spigot and mechanical fittings.
- Simple pipe preparation using rotary or hand scraping tools for electrofusion jointing.
- Suitable for open-cut and no-dig installation techniques and for use in pipeline rehabilitation projects.



KM83015

## Approvals

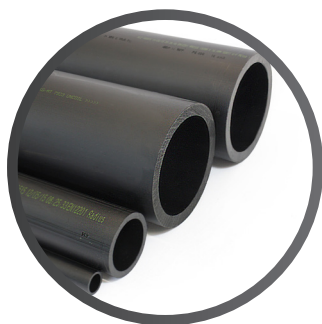
- BS EN 12201-2: 2011+A1:2013.
- WRAS Approved Material, that complies with Regulation 4 of the Water Supply regulations.



250655017

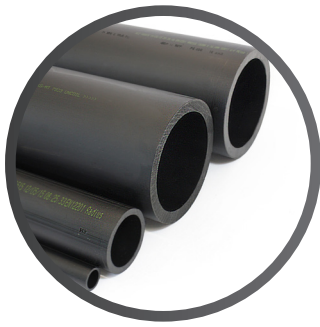
It is important to note that Radius Systems Black PE100 pipes are not approved for applications where DWI Regulation 31(4)(a) is required.

# Product Range



## PE100 Black Pipe

Nominal diameter	SDR	Nominal Pressure (PN)*	Product code straight pipe			Product code coiled pipe				Weight
			6m	12m	13.5m	25m	50m	100m	150m	
20	9	16	-	-	-	VC2520	VC2521	VC2522	VC2523	0.2
25	11	16	-	-	-	VC2527	VC2528	VC2529	VC2530	0.2
32	11	16	-	-	-	VC2534	VC2535	VC2536	VC2537	0.3
50	11	16	VC7549	-	-	VC2554	VC2551	VC2552	VC2553	0.7
63	11	16	VC2568	-	-	VC2570	VC2571	VC2572	VC2573	1.1
90	11	16	VC2625	VC2627	-	-	VC2628	VC2629	-	2.3
110	11	16	VC2733	VC2735	-	-	VC2736	VC2737	-	3.3
125	11	16	VC2787	VC2789	-	-	VC2790	VC2791	-	4.3
140	11	16	-	VC2843	-	-	-	-	-	5.4
160	11	16	VC2958	VC2960	-	-	VC2961	VC2962	-	7.1
180	11	16	VC3030	VC3032	-	-	VC3034	VC3035	-	9.0
200	11	16	VC3107	VC3109	-	-	-	-	-	11.0
225	11	16	VC3211	VC3213	-	-	-	-	-	14.0
250	11	16	VC3266	VC3269	-	-	-	-	-	17.1
315	11	16	VC3485	VC3488	-	-	-	-	-	27.2
355	11	16	VC3544	VC3547	VC3548	-	-	-	-	34.5
400	11	16	-	VC3607	-	-	-	-	-	43.8
450	11	16	-	VC3721	-	-	-	-	-	55.5
500	11	16	-	VC3829	-	-	-	-	-	68.4
560	11	16	-	VC3885	-	-	-	-	-	85.7
630	11	16	VC3939	VC3941	VC3942	-	-	-	-	108.5
90	17	10	VC2643	VC2645	-	-	VC2646	VC2647	-	1.6
110	17	10	VC2751	VC2753	-	-	VC2754	VC2755	-	2.3
125	17	10	VC2805	VC2807	-	-	VC2808	VC2809	-	3.0
160	17	10	VC2976	VC2978	-	-	VC2979	VC2980	-	4.8
180	17	10	VC3050	VC3052	-	-	VC3054	VC3055	-	6.1
200	17	10	VC3121	VC3123	-	-	-	-	-	7.5
225	17	10	VC3225	VC3227	VC3228	-	-	-	-	9.5
250	17	10	VC3284	VC3287	VC3288	-	-	-	-	11.6
280	17	10	VC3395	VC3397	-	-	-	-	-	14.6
315	17	10	VC3503	VC3506	VC3507	-	-	-	-	18.5
355	17	10	VC3562	VC3565	VC3566	-	-	-	-	23.6
400	17	10	VC3622	VC3625	-	-	-	-	-	29.7
450	17	10	VC3735	VC3737	VC3738	-	-	-	-	37.7
500	17	10	VC3843	VC3845	VC3846	-	-	-	-	46.5
560	17	10	VC3899	VC3901	VC3902	-	-	-	-	58.3
630	17	10	VC3955	VC3957	-	-	-	-	-	73.8
315	21	8	-	-	VC3524	-	-	-	-	15.0
400	21	8	-	-	VC3644	-	-	-	-	24.4
450	21	8	-	-	VC3754	-	-	-	-	30.8
500	21	8	-	-	VC3862	-	-	-	-	38.0
560	21	8	-	-	VC3918	-	-	-	-	47.5
630	21	8	-	-	VC3974	-	-	-	-	60.0
710	21	8	-	-	VC4030	-	-	-	-	76.5
800	21	8	-	-	VC4086	-	-	-	-	97.1
315	26	6	-	-	VC3532	-	-	-	-	12.4
355	26	6	-	-	VC3592	-	-	-	-	15.6
400	26	6	-	-	VC3653	-	-	-	-	19.8



## PE100 Black Pipe - continued

Nominal diameter mm	SDR	Nominal Pressure (PN)* Bar	Product code straight pipe			Product code coiled pipe				Weight kg/m
			6m	12m	13.5m	25m	50m	100m	150m	
450	26	6	-	-	VC3762	-	-	-	-	25.0
500	26	6	-	-	VC3870	-	-	-	-	30.8
560	26	6	-	-	VC3926	-	-	-	-	38.6
630	26	6	-	-	VC3982	-	-	-	-	48.9
710	26	6	-	-	VC4038	-	-	-	-	62.3
800	26	6	-	-	VC4094	-	-	-	-	78.9
900	26	6	-	-	VC4150	-	-	-	-	100.5
1000	26	6	-	-	VC4198	-	-	-	-	122.9
1100	26	6	-	-	VC4254	-	-	-	-	149.6
1200	26	6	-	-	VC4310	-	-	-	-	176.9

Note: Pipe weights shown are for lifting and handling purposes. They are based on the maximum diameter and pipe wall thicknesses as specified in BS EN 12201-2.

\*Nominal Pressure (PN)=For plastic piping systems conveying water, it corresponds to the Allowable Operating Pressure (PFA maximum hydrostatic pressure in bar) which can be sustained with water at 20°C with a design basis of 50 years and a minimum design coefficient (C=1.25).

For alternative operating conditions please contact Radius Systems.

