



Xylem Avensor

SMART MONITORING & CONTROL FOR ALL YOUR WATER ASSETS

Get alerts and data-driven insights to act fast and make smart decisions

Without real-time data about how your pumps or other assets are performing, you can face a number of problems. If one of your pumps fails and you don't know about it, you may have to deal with unplanned downtime or a spill. When a problem arises, you also don't know what exactly needs to be fixed. This means a technician may first have to assess the problem, then come back with the correct parts and tools, leading to even more downtime.

Xylem solves this with Avensor, a digital solution for monitoring assets like pumps, mixers, UV units and other equipment. Avensor collects and analyzes data from your assets to give you live data, trends and alerts via the web and our mobile app. Think of Avensor as an easy-to-use SCADA system with plug-and-play installation. You get the right data when you need it, and you can make smarter decisions about how your resources are used.



Avensor

A cloud-based solution for managing water infrastructure assets



Data-driven insights

Get insights to make better decisions about operations and investments



Accessible and easy to deploy

Avensor is easy to deploy and scale up across your organization



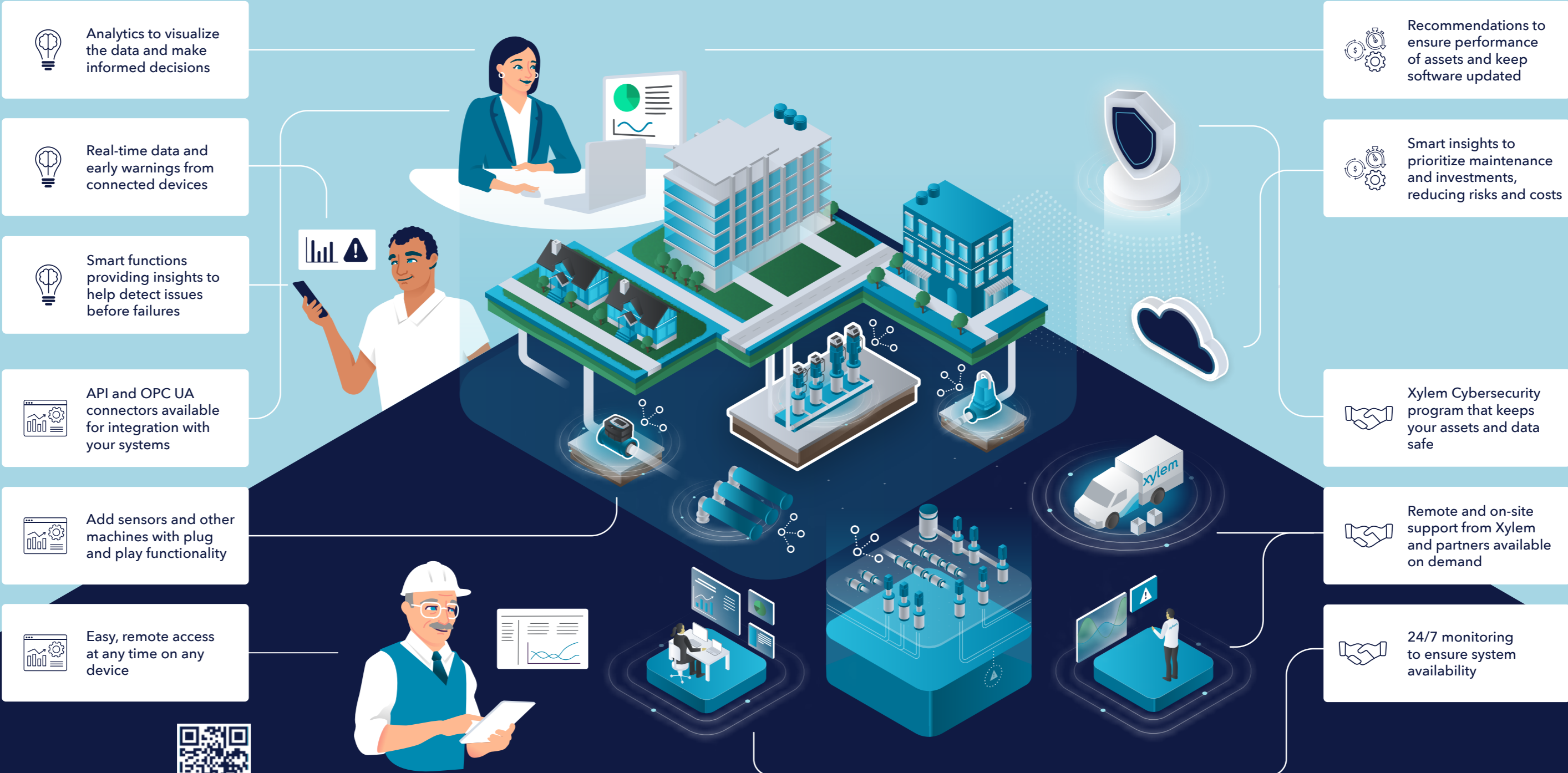
Asset lifecycle management

Better manage your assets, and reduce risks and costs



End-to-end service responsibility

24/7 system monitoring and optional remote and onsite support





How Avensor works

Avensor connects with a large number of devices and machines by plug and play, and it can also be configured to support other devices. The only equipment needed is a modem connected to the assets, a device for monitoring and a user account.

Once logged in, the user can monitor assets and water facility remotely on a smartphone, tablet or computer. Alerts are sent to the right people through app notifications, text messages or emails.

Security is the foundation for all Xylem products. Our global team of security experts maintain visibility to current and emerging regulations while diligently defending against cyber threats. You can trust secure development processes aligned with IEC-62443 and Xylem's partnership to help navigate any compliance needs.

Results around the world

Avensor has been installed at more than 2,000 stations, for 700+ customers in 30 countries, with impressive results. The Port of Trelleborg in Sweden, for example, was having a pump stoppage one or two times a month. After installing Avensor and a smart pumping system from Xylem, the port hasn't had a pump stoppage in nearly three years, saving them time and money.

"Avensor gives us a whole new overview," says Håkan Nilsson, Service Manager at the Port of Trelleborg. "We can see everything that's going on and can quickly be in place if needed. There are plenty of pump manufacturers, but with Xylem, the whole system is provided, that's what I'm most satisfied with. Getting great and fast service is important to us, as well as being able to trust an organization."

xylem  **vue**

Digital transformation starts with Xylem Vue

Avensor is an important part of our full suite of digital solutions, Xylem Vue, which combines smart and connected technologies, intelligent systems and services, and 100+ years of problem-solving expertise. Our digital solutions make the work of water and wastewater operators easier by remotely managing assets, optimizing performance and predicting failures.

For more information on Xylem Vue, go to xylem.com/XylemVue

xylem
Let's Solve Water