

About:

PLASSON have one of the widest ranges of pipe fittings in the world with sizes ranging from 16mm to 900mm, pressure ratings 0 bar to 25 bar, accepting nearly all existing pipe ranges, metric and imperial including polyethylene, lead, copper and galvanised. PLASSON have a 50 year in the ground track record for its products. We pride ourselves not only on the quality of our fittings but also on our high standard of service, delivery and aftersales support.

Product Range:

- mechanical
- pushfit
- electrofusion
- valves
- metering
- repair clamps
- threaded
- tools/accessories
- specialist ef tooling

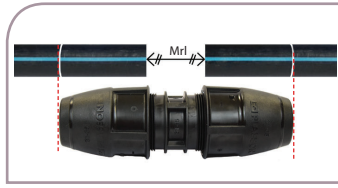
Contact Us:

Plasson UK Ltd
Plasson House
27 Albert Drive
Burgess Hill
West Sussex
RH15 9TN

Tel: 01444 244446
Fax: 01444 258683
sales@plasson.co.uk



Slide N' Seal Universal Slip Coupler



Mark pipe insertion depth. (approximately half the fitting length). Undo nuts 1 to 2 turns while ensuring they remain on the fitting.

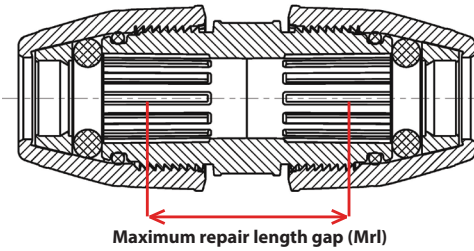


Insert each pipe to the marking.



Tighten each nut firmly with a Plasson wrench while holding the body with another wrench. The threads should no longer be visible.

Repair Lengths (Mrl)

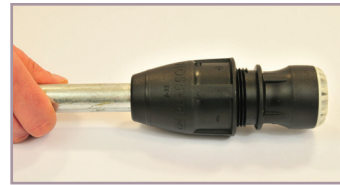


d (popular pipes)	Mrl	L
24-28 (25mm, 3/4")	90mm	200
31-35 (32mm, 1")	100mm	210
40-43 (40mm, 1 1/4")	110mm	250
48-51 (50mm, 1 1/2")	120mm	270
60-64 (63mm, 2")	130mm	310

Pushfit Universal



Prepare the pipe by removing any unsound material adhering to the pipe then cut and de-burr pipe as necessary.

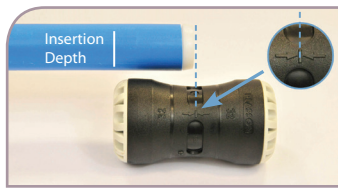


Push the pipe into the fitting up to the internal stop.

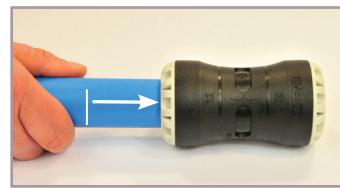


Tighten firmly using a PLASSON wrench or similar.

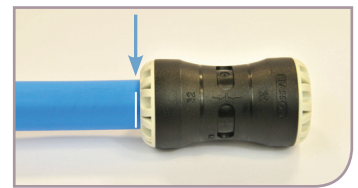
Pushfit Assembly



Insert liner into pipe then measure and mark correct insertion depth against fitting as shown.



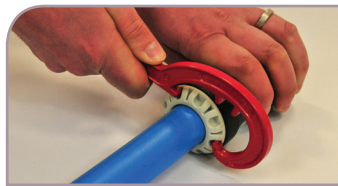
Push pipe into fitting up to the mark ensuring the pipe has been pushed past the internal 'O' ring.



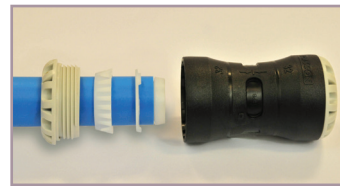
Make sure the mark on the pipe is in line with the end of the fitting.

Note: For assembly of Cu/PB/PEX, follow instructions above but ensure pipe manufacturers liner is fitted where applicable as per their instructions.

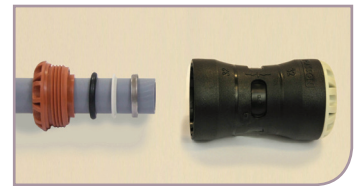
Pushfit Disassembly



Using the Pushfit wrench, turn the nut anticlockwise to release pipe from fitting.



If the fitting is to be reused, the split ring, grip ring, and nut **MUST** be inserted in the order shown.



The metal grip ring in the Cu/PB/PEX fittings **MUST** be replaced if the fitting is reused. Reassemble in the order shown.